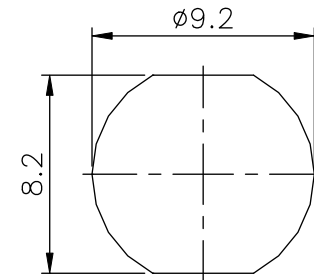
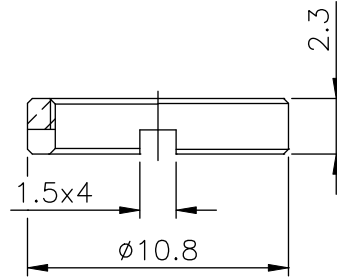
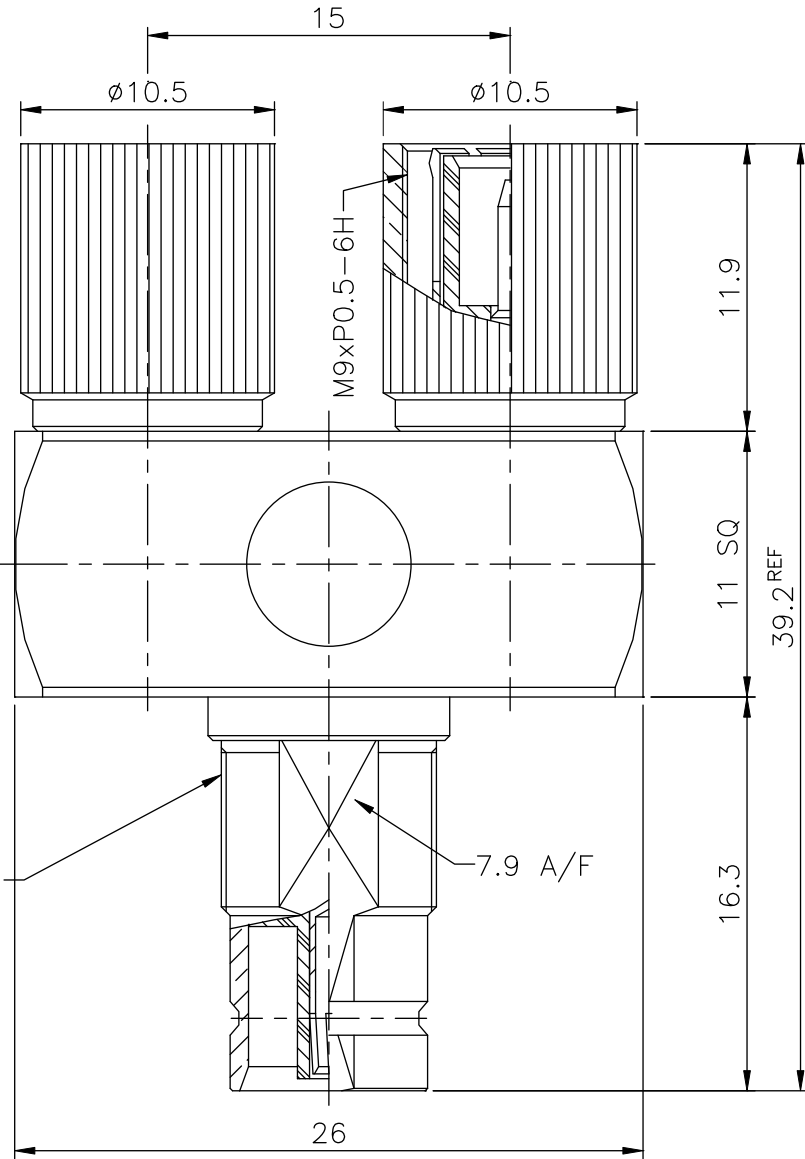


REMARK: RoHS COMPLIANT

REV	DESCRIPTION	DATE
A1	Initial Release	06'.08.24



RECOMMENDED MOUNTING HOLE

- FINISH (PLATING THICKNESS IN MICRO-INCHES)
1. BRASS PER QQ-B-626
 2. NICKEL PL 70 MIN THICK OVER COPPER STRIKE
 3. GOLD PL 3 MIN OVER NICKEL PL 70 MIN THICK OVER COPPER STRIKE
 4. TEFLON MIL-P-19468
 5. PHOSPHOR BRONZE PER QQ-B-750

NUT	NOTE 1	NOTE 2
COVER	NOTE 1	NOTE 2
BODY	NOTE 1	NOTE 2
INSULATOR	NOTE 4	WHITE
CONTACT PIN	NOTE 5	NOTE 3
SHELL	NOTE 1	NOTE 2
CONTACT BODY	NOTE 5	NOTE 3
CONTACT PIN	NOTE 1	NOTE 3
INSULATOR	NOTE 4	WHITE
BODY	NOTE 1	NOTE 2
CONTACT PIN	NOTE 1	NOTE 3
INSULATOR	NOTE 4	WHITE
CUBE BODY	NOTE 1	NOTE 2
DESCRIPTION	MATERIAL	FINISH

M9xP0.5-6g

7.9 A/F

UNLESS OTHERWISE SPECIFIED TOLERANCES

0.5~6	= ±0.2
>6~30	= ±0.4
>30~120	= ±0.6
>120~315	= ±1
>315~1000	= ±1.6
ANGLES	= ±5°

	PANSTRONG COMPANY LTD.			DRAWN BY	TOMMY
				CHECKED	
TITLE:	1.6/5.6 Y-LINK P-J-P ADAPTOR			APPROVED	
PART NO:	1656F/2xM-Y01			DRAW NO	
File Number:				UNIT	mm
SCALE	3:1	REV	A1		