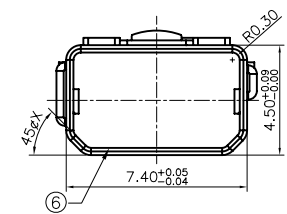
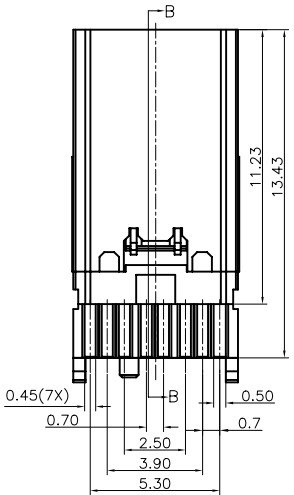
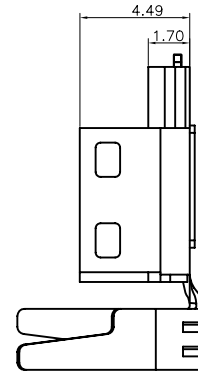
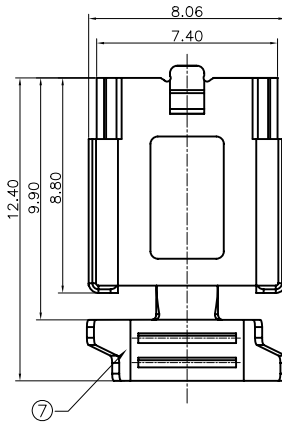
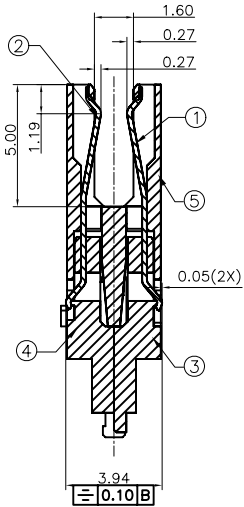
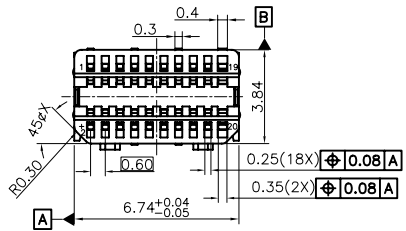


REV	DESCRIPTION	DATE
A	Initial Release	12'.12.18



PART NO.  
MDP 11 - 20 M V xx 1 N  
1 2 3 4 5 6 7

- Processing Type  
11: Solder
- Contact Postions  
20: 20 Pins
- Connector Type  
M: Male Plug
- Insulator Color  
V: Ivory K: Black
- Contact Gold Plating  
03: Gold Flash  
15: 15u" Gold over Nickel  
30: 30u" Gold over Nickel
- Shell Construction  
1 : with Harpoon Profile for Shell
- Shell Plating  
N : Solder able Nickel Plating  
G : Flash Gold

*RoHS compliant*

ITEM	PART NAME	Q'TY	MATERIAL	FINISH	NOTE
⑦	BACK SHELL	1	SPCC	Cu ALL OVER.PLATED OVER NICKEL	
⑥	FRONT SHELL	1	BRASS	Cu ALL OVER.Ni OR Au PLATED	
⑤	HOUSING	1	PA46 30%G/F		UL94V-0
④	BOTTOM-MOLDING	1	LCP 30%G/F		UL94V-0
③	TOP-MOLDING	1	LCP 30%G/F		UL94V-0
②	CONTACT 2	1	COPPER ALLOY	GOLD, OR NICKEL PLATING	
①	CONTACT 1	1	COPPER ALLOY	GOLD, OR NICKEL PLATING	

TOLERANCE UNLESS SPECIFIED:  
.000 ± 0.10  
.00 ± 0.20  
.0 ± 0.30  
± 0.50  
ANGLE ± 2°

	PANSTRONG COMPANY LTD.		DRAWN BY	TOMMY
			CHECKED	
TITLE:		MINI DIP PLUG SOLDER TYPE		APPROVED
PART NO:		MDP11-20MVxx1N		DRAWING NO.
SCALE	/	REV	A	UNIT mm

