

REV.	EC#	DESCRIPTION	DATE	DRAWN	CHECKED	APPROVED
D	SZECR-04311	MODIFY PLATING SPEC. Δ X1	06/29/04'	LONG	TOM	TOM
E	SZECR06103	Δ X3 AX2	06/07/06'	BIN.DI		

NOTES :

- 1.0. RATING :
 - 1.1. VOTAGE : 30 VAC (R.M.S.)
 - 1.2. CURRENT : 1.5A MAXIMUM
 - 1.3. TEMPERATURE : -55°C TO +85°C
- 2.0. ELECTRICAL CHARACTERISTIC :
 - 2.1. CONTACT RESISTANCE : 30 MILLIOHMS MAXIMUM INITIAL
 - 2.2. INSULATION RESISTANCE : 1,000 MEGOHMS MINIMUM
 - 2.3. DIELECTIC WITHSTANDING VOLTAGE : 500 VAC AT SEA LEVEL
 - 2.4. CAPACITANCE : 2 PICOFARADS MAXIMUM AT 1KHZ
- 3.0. OTHERS :
 - 3.1. SUCTION-AREA FOR SMT-PIPET PLANE SMOOTH
 - 3.2. SMT-SOLDERING-PADS (USB-CONNECTOR)
SURFACE Min. 2um Tin OVER 1.25 Min. Nickel
 - 3.3. SMT-SOLDERING-PAD (GROUND-CONNECTOR)
 - 3.4. ALL SOLDERING-AREA COPLANAR IN ONE PLANE
TDLRANCE : Max. 0.10mm
 - 3.5. PLASTIC-HOUSING THERMAL RESISTANT
 - 3.6. RECOMMENDED PC BOARD MOUNTING DIMMENSION : REFER FIGURE A
 - 3.7. PRODUCT NUMBERING CODE : REFER TO TABLE A

- TABLE A:
PART NO:
UBS 03 - 4F K XX C R
1 2 3 4 5 6 7
1. USB B VERTICAL
 2. 03 : SMT
 3. 4F : 4P Female
 4. Insulator Color : K : Black
 - Δ E 5. Contact Plating: Selective Au over 50u"-100u" Ni in Front Contact, and 100u"-200u" in Solder Tails
 - 05: 5u" Selective Au
30: 30u" Selective Au
 6. Shell Plating :
C : Nickel + Bright Tin
 7. Packing
R : Tape & Reel

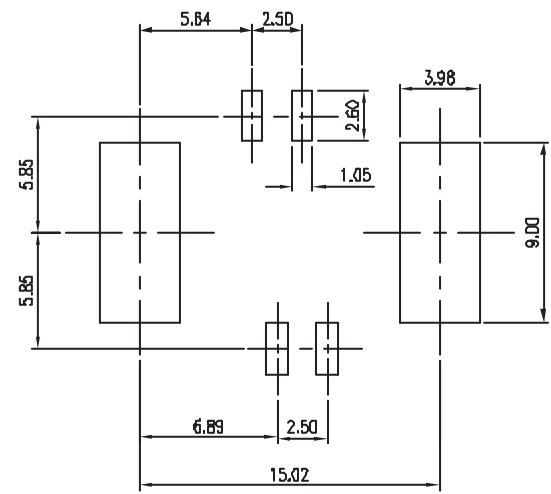
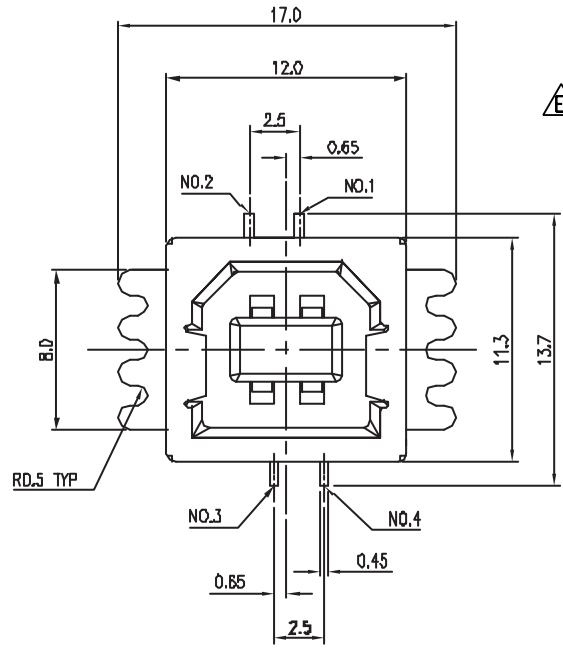
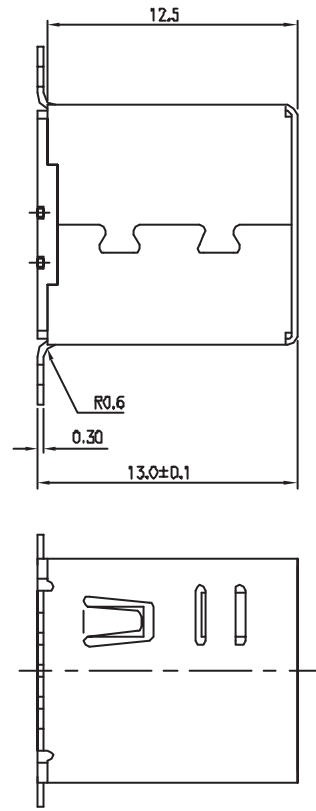



FIGURE A

ITEM	NAME	QTY	MATERIAL / FINISH
3	CONTACT	4	COPPER ALLOY/SELECTIVE GOLD PLATED (REFER TO "TABLE A")
2	INSULATOR	1	HIGH TEMPERATURE THERMOPLASTIC, UL 94V-0 RATED
1	SHELL	1	COPPER ALLOY/100-200u" BRIGHT TIN OVER 100u" Min. COPPER

RoHS Compliant

 貝強實業有限公司 PANSTRONG COMPANY LTD.	DRAWN BY		TOMMY	
	CHECKED			
TITLE:	USB CONNECTOR, SERIES B, 4POSITIONS, VERTICAL TYPE, SMT			APPROVED
PART NO:	UBS03-4FKXXCR			DRAW NO
DRAW. BOX NO:				
SCALE	4:1	REV	D	UNIT mm

