

REV	DESCRIPTION	DATE
A	Initial Release	08'.04.25

SPEC :

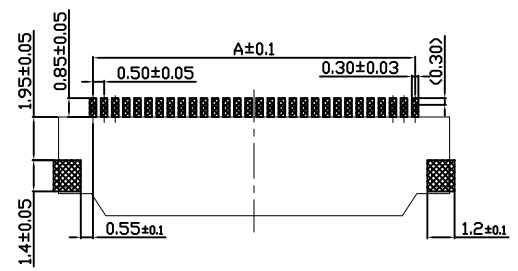
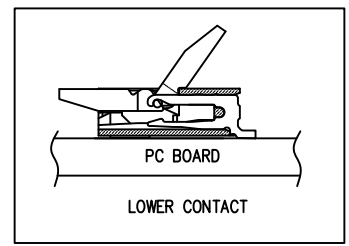
- Housing: LCP UL94V-0  
Initial: 500M Ohms Min.  
Color: natural color
- Locker: LCP UL94V-0  
Initial: 500M Ohms Min.  
Color: Black
- Contact: Phosphor Bronze  
Initial: 30m Ohms Max.  
Tin/Lead-Psated  
Voltage Rating: 50V AC,DC
- Solder Tab: Phosphor Bronze  
Tin/Lead-Psated
- Temperature Rating : -25°C ~ +85°C
- Dielectric Withstanding Voltage : 500V AC/Min

PART NO.

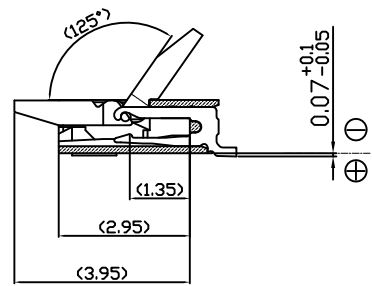
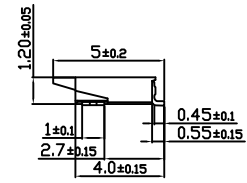
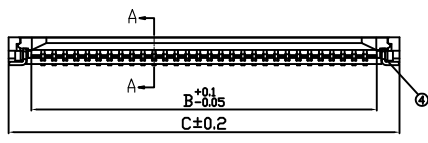
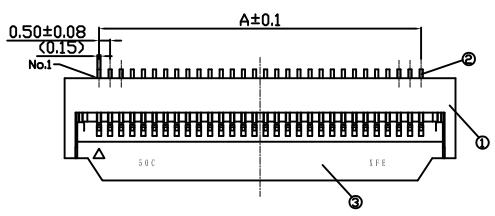
FPxxH12-E03RWDZ-CF-2GR  
1 23

- Contact Positions: 04...40  
Contact Plating: Blank: Tin  
G : Flash Gold
- Package: T: Tube  
R: Tape & Reel

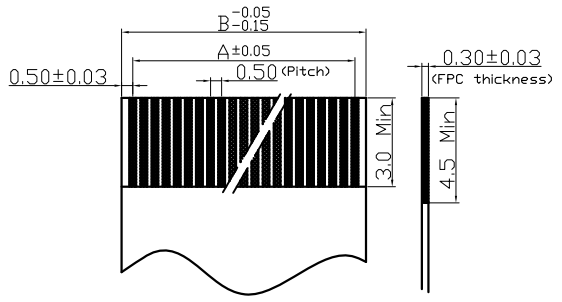
Pin	Type	A	B	C	Pin	Type	A	B	C
4	0.5F2-4PBX	1.5	2.6	4.60	33	0.5F2-33PBX	16	17.1	19.10
5	0.5F2-5PBX	2	3.1	5.10	34	0.5F2-34PBX	16.5	17.6	19.60
6	0.5F2-6PBX	2.5	3.6	5.60	35	0.5F2-35PBX	17	18.1	20.10
7	0.5F2-7PBX	3	4.1	6.10	36	0.5F2-36PBX	17.5	18.6	20.60
8	0.5F2-8PBX	3.5	4.6	6.60	37	0.5F2-37PBX	18	19.1	21.10
9	0.5F2-9PBX	4	5.1	7.10	38	0.5F2-38PBX	18.5	19.6	21.60
10	0.5F2-10PBX	4.5	5.6	7.60	39	0.5F2-39PBX	19	20.1	22.10
11	0.5F2-11PBX	5	6.1	8.10	40	0.5F2-40PBX	19.5	20.6	22.60
12	0.5F2-12PBX	5.5	6.6	8.60	41	0.5F2-41PBX	20	21.1	23.10
13	0.5F2-13PBX	6	7.1	9.10	42	0.5F2-42PBX	20.5	21.6	23.60
14	0.5F2-14PBX	6.5	7.6	9.60	43	0.5F2-43PBX	21	22.1	24.10
15	0.5F2-15PBX	7	8.1	10.10	44	0.5F2-44PBX	21.5	22.6	24.60
16	0.5F2-16PBX	7.5	8.6	10.60	45	0.5F2-45PBX	22	23.1	25.10
17	0.5F2-17PBX	8	9.1	11.10	46	0.5F2-46PBX	22.5	23.6	25.60
18	0.5F2-18PBX	8.5	9.6	11.60	47	0.5F2-47PBX	23	24.1	26.10
19	0.5F2-19PBX	9	10.1	12.10	48	0.5F2-48PBX	23.5	24.6	26.60
20	0.5F2-20PBX	9.5	10.6	12.60	49	0.5F2-49PBX	24	25.1	27.10
21	0.5F2-21PBX	10	11.1	13.10	50	0.5F2-50PBX	24.5	25.6	27.60
22	0.5F2-22PBX	10.5	11.6	13.60	51	0.5F2-51PBX	25	26.1	28.10
23	0.5F2-23PBX	11	12.1	14.10	52	0.5F2-52PBX	25.5	26.6	28.60
24	0.5F2-24PBX	11.5	12.6	14.60	53	0.5F2-53PBX	26	27.1	29.10
25	0.5F2-25PBX	12	13.1	15.10	54	0.5F2-54PBX	26.5	27.6	29.60
26	0.5F2-26PBX	12.5	13.6	15.60	55	0.5F2-55PBX	27	28.1	30.10
27	0.5F2-27PBX	13	14.1	16.10	56	0.5F2-56PBX	27.5	28.6	30.60
28	0.5F2-28PBX	13.5	14.6	16.60	57	0.5F2-57PBX	28	29.1	31.10
29	0.5F2-29PBX	14	15.1	17.10	58	0.5F2-58PBX	28.5	29.6	31.60
30	0.5F2-30PBX	14.5	15.6	17.60	60	0.5F2-60PBX	29.5	30.6	32.60
31	0.5F2-31PBX	15	16.1	18.10					
32	0.5F2-32PBX	15.5	16.6	18.60					



RECOMMENDED PCB LAYOUT



SECTION A-A(21)



APPLICABLE FPC

RoHS Compliant

General Tolerance
X.± 0.50
.X± 0.30
.XX± 0.20
.XXX± 0.10

				DRAWN BY		TOMMY			
				CHECKED					
TITLE:		FPC P0.5 H1.2 SMT		APPROVED					
PART NO:		FPxxH12-E03RWDZ-CF-2		DRAWING NO.		FPCC-00512SF-XXX			
SCALE		4:1		REV	A		UNIT	mm	