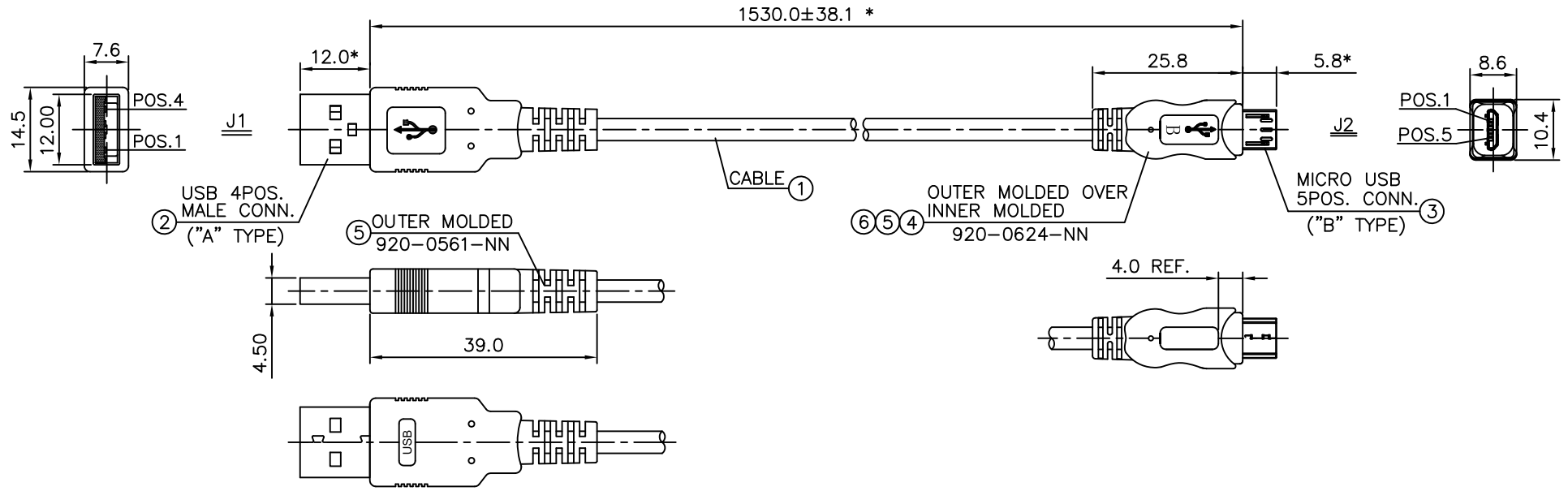


REV.	ECO.	NO.	APPD
A	REL.		KENNELLY 02/05'09



- NOTES:
1. ALL DIMENSIONS ARE "MM".
 2. ANY OPEN, MISWIRING & SHORT & INTERMITTENT ARE NOT PERMITTED.
 3. CIRRIS 1000H OR EQUIVALENT CABLE TESTER USING FOLLOWING PARAMETERS:
300V DC, 10mS, 20MΩ MIN. & 2.0Ω MAX.
 4. THE PRODUCT MUST BE COMPLY WITH THE DIRECTIVE OF RoHS.

6	H.S. TUBE	1PC	UL224 I.D=Ø1.0MM,COLOR: BLACK,L=10.0MM	061-001-063
5	OUTER MOLDED	12.0gm	PVC, SHORE A: 85±3	071-001-005
4	INNER MOLDED	3.0gm	COLOR: BLACK(600-BLK-001)	
3	MICRO USB 5P CONN. ('B' TYPE) (SOLDER TYPE)	1PC	CONTACT: PHOSPHOR BRONZE, 30u" GOLD PLATED, INSULATOR COLOR: BLACK,UL94V-0 SHIELD CASE: NICKEL PLATED	022-00X-1053
2	USB 4POS. MALE CONN. ('A' TYPE) (SOLDER TYPE)	1SET	CONTACT:COPPER ALLOY, 30u" GOLD PLATED INSULATOR COLOR: WHITE, UL94V-0 SHIELD CASE: NICKEL PLATED	022-001-711 051-001-390 051-001-391
1	USB 2.0 CABLE	1PC	#24X2C+#28X1P+AL/MYLAR+DRAIN WIRE +BRAID 65%+JACKET: PVC, O.D=Ø4.50±0.1MM, UL2725, COLOR: BLACK(600-BLK-001)	011-001-1520
No.	ITEM	Q'TY	DESCRIPTION	PART NO.

—	EMPTY		4
SHELL	BRAID(14/16)		—
	BRAID(2/16)+DRAIN WIRE		SHELL
4	BLACK	24AWG	5
3	GREEN	TWIST 28AWG	3
2	WHITE	PAIR 28AWG	2
1	RED	24AWG	1
J1	WIRE COLOR		J2
WIRE CONNECTION TABLE			



X.:±	.XX:±0.25	X°:±	.XX°:±	PART NO.(INTENDED USE)	TITLE: USB-A/MICRO USB-B CABLE ASS'Y
.X:±0.5	.XXX:±	.X°:±	.XXX°:±	~	
				APPD: KENNELLY 02/05'09	DWG NO.: CPC01-4677C
				CHKD: ALAN 02/05'09	
				DR: CATHY 02/05'09	
				SCALE	SHEET
				NONE	1/1
				REV.	A

