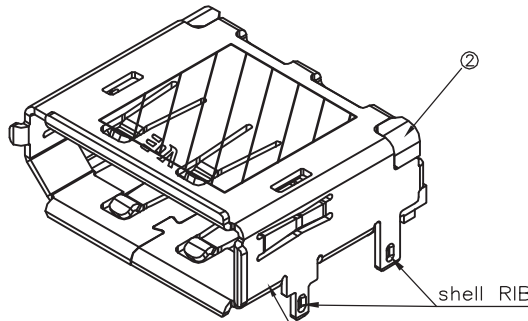
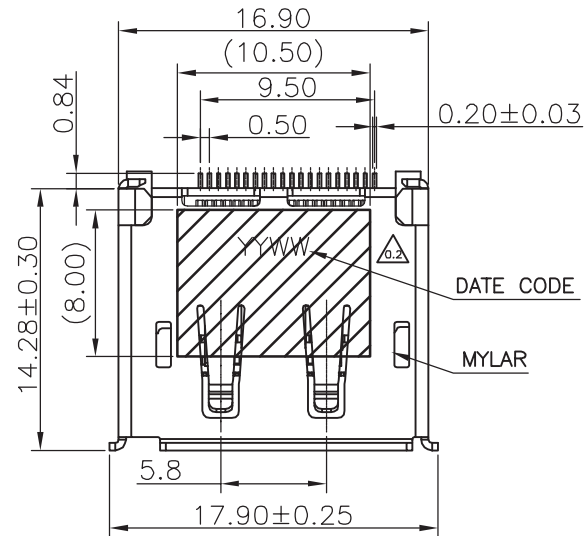
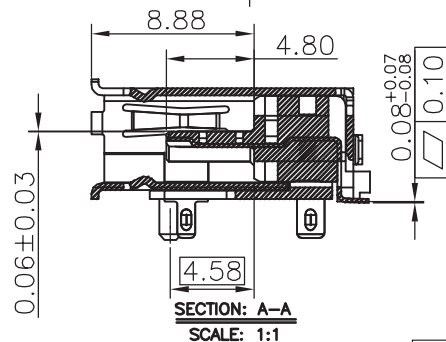
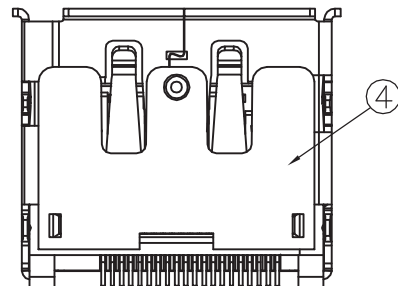
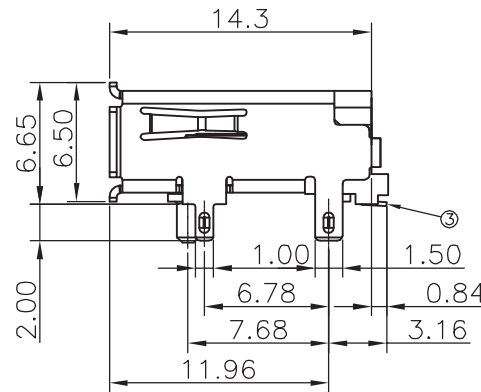
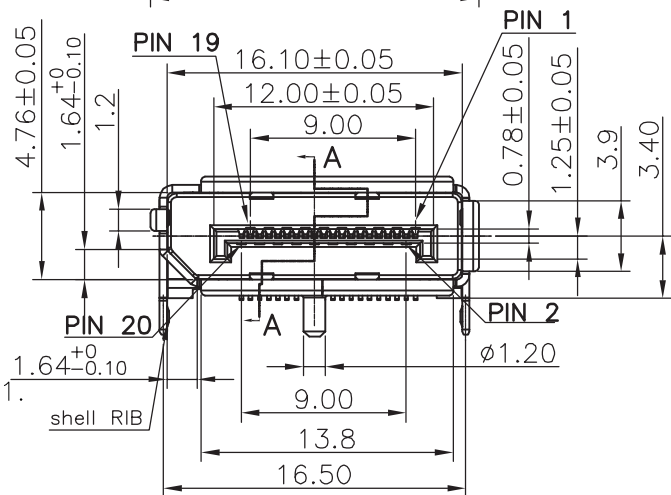


REV	DESCRIPTION	DATE
A	Initial Release	15.06.03



DATE CODE  
 YY WW  
 WEEK:01~55  
 YEAR:14,15,...

④	COVER	THERMOPLASTIC UL94V-0	1
③	CONTACT	COPPER ALLOY	20
②	HOUSING	THERMOPLASTIC UL94V-0	1
①	SHELL	COPPER ALLOY	1
ITEM	PART	SPECIFICATION	QTY'S



TOLERANCE	UNSPECIFIED
.000	± 0.15
.00	± 0.20
.0	± 0.25
.	± 0.30
ANGLE	± 2°

SPECIFICATIONS:

- MECHANICAL:
  - INSERTION FORCE: 44.1 N MAX
  - WITHDRAWAL FORCE: 9.8 N MIN.  
AFTER 10,000 CYCLES MATING: 0.5kgf MIN.
- ELECTRICAL:
  - CONTACT CURRENT RATING: 0.5A MIN.
  - VOLTAGE RATING: 40V AC (rms)
  - WITHSTANDING VOLTAGE: 500 VAC FOR 1 MINUTE.  
INSULATION RESISTANCE: 100 MILLIOHMS MAX.
  - CONTACT RESISTANCE: 30 MILLIOHMS MAX.
- ENVIRONMENTAL:
  - OPERATING TEMPERATURE: -40°C TO +85°C

PART NO.

DSP03RM - 20 F K x x x x R x  
 1 2 3 4 5 6 7 8 9 10

- Processing Type  
03M: SMT Insert Molding
- Contact Positions  
20: 20 Pins
- Connector Type  
F: Receptacle Socket
- Insulator Color  
K: Black
- Contact Plating:  
15: Contact Area: Au 15u", Solder Area: Sn Plated  
30: Contact Area: Au 30u", Solder Area: Sn Plated
- Shell Type:  
N : Nickel G: G/F
- Shell Type :  
0 : With Cover & Post, With RIB  
1 : With Cover & Post, Without RIB
- Auxiliary Code :  
0 : W/O D/C, W/O Mylar  
1 : W/O D/C, WITH Mylar  
2 : WITH D/C, WITH Mylar
- Package  
R: Tape Reel  
P: Tray Packing
- Suffix Code:  
Blank: Shell Material: Brass



PANSTRONG COMPANY LTD.

DRAWN BY TOMMY

CHECKED

TITLE:

DISPLAYPORT  
RECEPTACLE  
SMT TYPE

APPROVED

PART NO:

DSP03RM-20FK Series

DRAWING NO.

SCALE

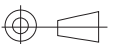
1:1

REV

A

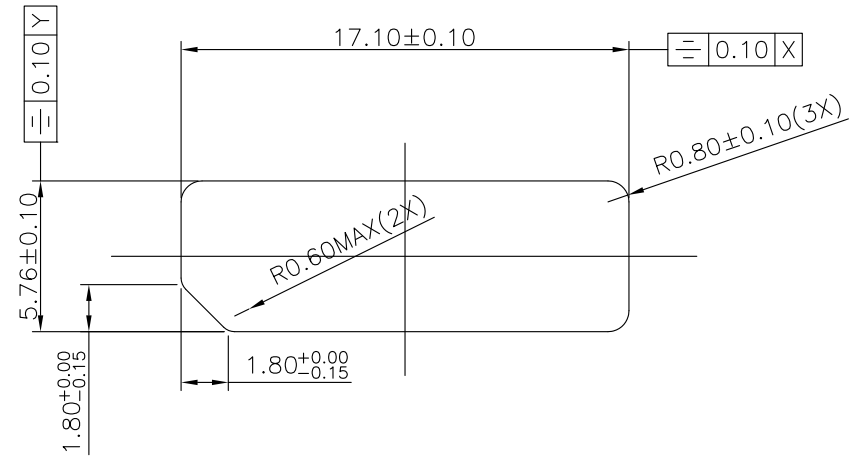
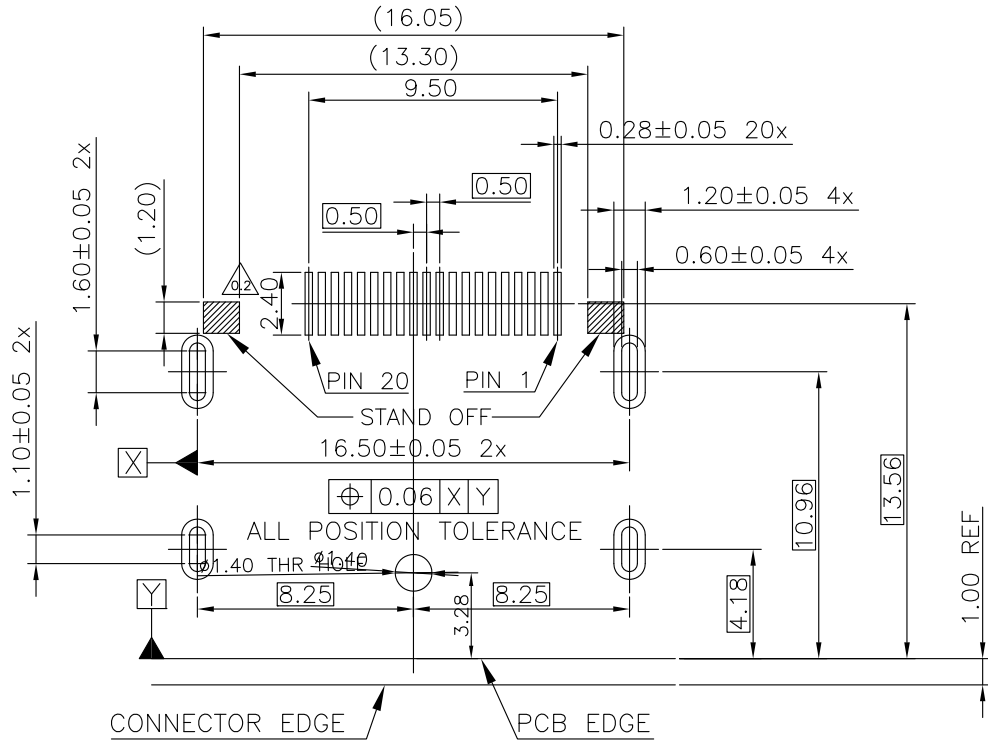
UNIT

mm



RoHS compliant

REV	DESCRIPTION	DATE
A	Initial Release	15.06.03



RoHS compliant

TOLERANCE	UNSPECIFIED
.0 0 0	± 0.15
.0 0	± 0.20
.0	± 0.25
.	± 0.30
ANGLE	± 2°

PANSTRONG COMPANY LTD.				DRAWN BY		TOMMY	
				CHECKED			
TITLE: DISPLAYPORT RECEPTACLE SMT TYPE				APPROVED			
				DRAWING NO.			
PART NO:		DSP03RM-20FK Series		UNIT		mm	
SCALE		1:1		REV		A	