

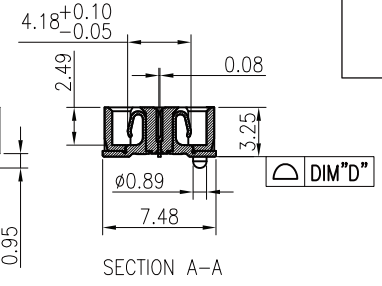
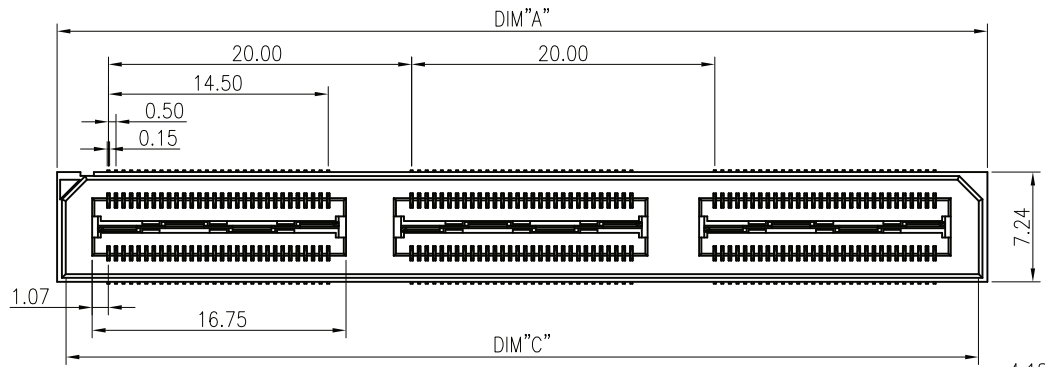
REV	DESCRIPTION	DATE
A	Initial Release	18.12.11

NOTES:

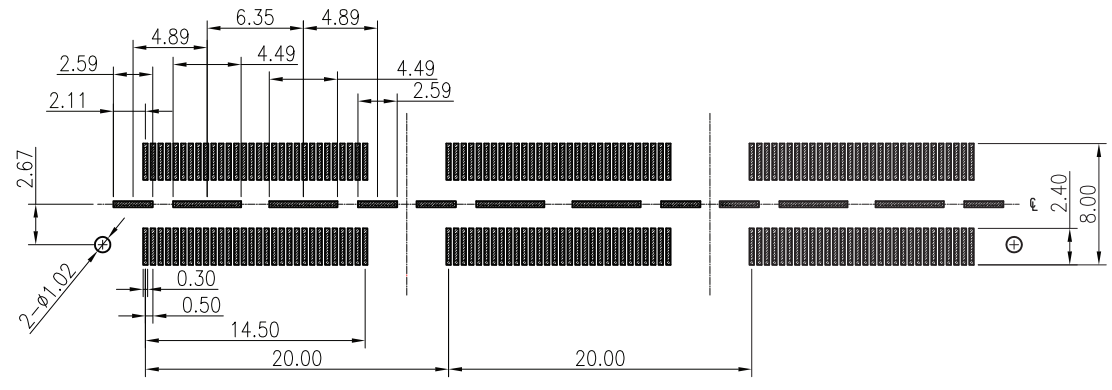
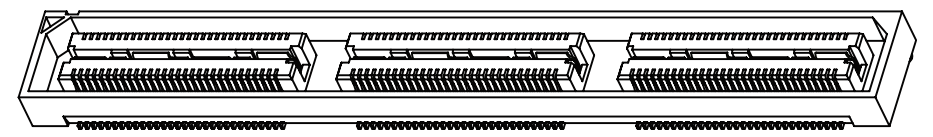
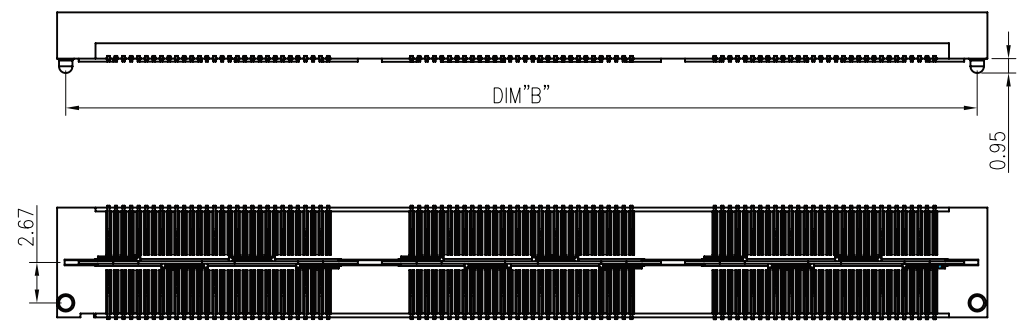
- HUOSING: LCP HIGH-TEMP THERMOPLASTIC UL94V-0 COLOR:BLACK
- TERMINAL/GROUND PLANE:PHOSPHOR BRONZE
PLATING:10u" GOLD IN CONTACT AREA, MATTE TIN ON TAIL.
- CODING INFORMATION: BBC 532D -xxxS-B3R-01

- WATER CODE
- PACKING: R: CARRIER REEL
- MATERIAL: 3:LCP
- COLOR: B:BLACK
- S:SOCKET
- PIN
- PLATING: G:GOLD FLASH 2:3u" GOLD IN CONTACT AREA, MATTE TIN ON TAIL.
- 3:5u" GOLD IN CONTACT AREA, MATTE TIN ON TAIL.
- 4:10u" GOLD IN CONTACT AREA, MATTE TIN ON TAIL.
- 5:15u" GOLD IN CONTACT AREA, MATTE TIN ON TAIL.
- 6:30u" GOLD IN CONTACT AREA, MATTE TIN ON TAIL.

0.5 BTB
HIGHLY: 32--3.25H



No. of contacts	Dimensions			
	A.	B.	C.	D.
60	21.38	20.13	20.18	0.10
120	41.38	40.13	40.18	0.10
180	61.38	60.13	60.18	0.15
240	81.38	80.13	80.18	0.15
300	101.38	100.13	100.18	0.15



RECOMMENDED PCB PATTERN DIM.
TOLERANCE : ±0.05

GENERAL TOLERANCE	
.X	±0.30
.XX	±0.20
.XXX	±0.10
ANGLES	±0° 30'

PANSTRONG COMPANY LTD.				DRAWN BY		TOMMY			
				CHECKED		TOMMY			
TITLE:				0.5mm DOUBLE ROW BTB SOCKET H3.25		APPROVED		CAROL	
PART NO:				BBC532D-xxxS-B3R-01		DRAWING NO.			
SCALE		1:1		REV		A		UNIT mm	

