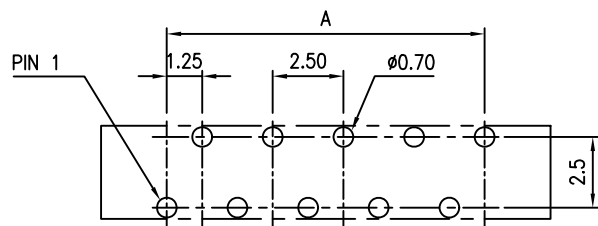
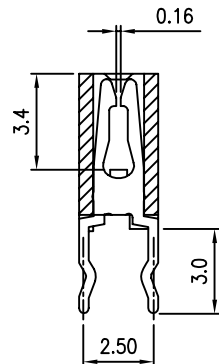
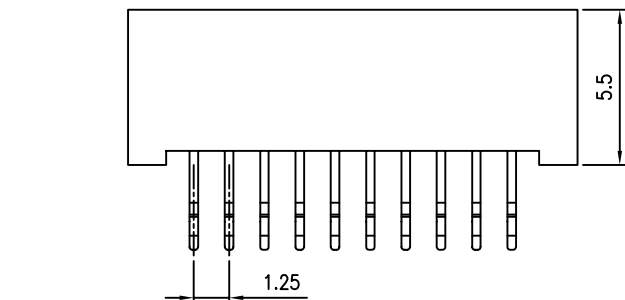
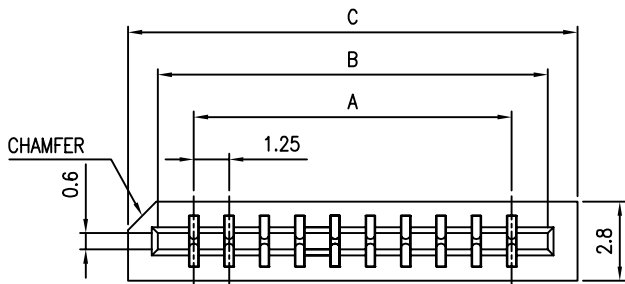
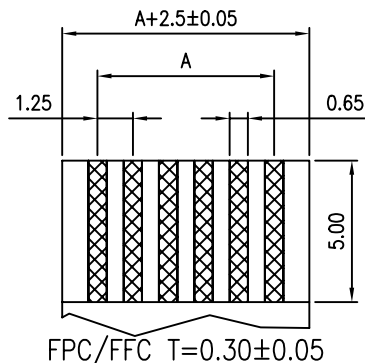


REV	DESCRIPTION	APPROVAL	DATE
A	Initial Release		00'.10.13



TOLERANCE: ±0.05
RECOMMENDED PCB LAYOUT



- MATERIAL
INSULATOR: GLASS-REINFORCED THERMOPLASTIC.
CONTACT: COPPER ALLOY.
PLATING: ALL TIN, LEAD FREE.
- ELECTRICAL
CURRENT RATING: 0.5 AMP.
DIELECTRIC WITHSTANDING VOLTAGE: 500 VAC MIN.
INSULATION RESISTANCE: 1000 MEGAOHMS MIN.
CONTACT RESISTANCE: 30 MILLIOHMS MAX.
- ENVIRONMENTAL
TEMPERATURE RANGE: -55°C TO +85°C.
- PART NO.

FP-xxB01SKN-T

Number of Contact
03...30

Package:
T : Tube

■ DIMENSION TABLE

Circuits	Dimension			Circuits	Dimension		
	A	B	C		A	B	C
3	2.50	5.05	7.15	21	25.00	27.55	29.65
4	3.75	6.30	8.40	22	26.25	28.80	30.90
5	5.00	7.55	9.65	23	27.50	30.05	32.15
6	6.25	8.80	10.90	24	28.75	31.30	33.40
7	7.50	10.05	12.15	25	30.00	32.55	34.65
8	8.75	11.30	13.40	26	31.25	33.80	35.90
9	10.00	12.55	14.65	27	32.50	35.05	37.15
10	11.25	13.80	15.90	28	33.75	36.30	38.40
11	12.50	15.05	17.15	29	35.00	37.55	39.65
12	13.75	16.30	18.40	30	36.25	38.80	40.90
13	15.00	17.55	19.65				
14	16.25	18.80	20.90				
15	17.50	20.05	22.15				
16	18.75	21.30	23.40				
17	20.00	22.55	24.65				
18	21.25	23.80	25.90				
19	22.50	25.05	27.15				
20	23.75	26.30	28.40				

TOLERANCES	
0	±0.40
0.0	±0.30
0.00	±0.20
0.000	±0.10

	PANSTRONG COMPANY LTD.			DRAWN BY	TOMMY
	TITLE: FFC/FPC 1.25 Pitch Non ZIF Top Entry Dual Contact DIP Type Standard PCB Layout			CHECKED	
PART NO: FP-xxB01SKN			APPROVED		
File Number:			DRAW NO		
SCALE	4:1	REV	A	UNIT	mm