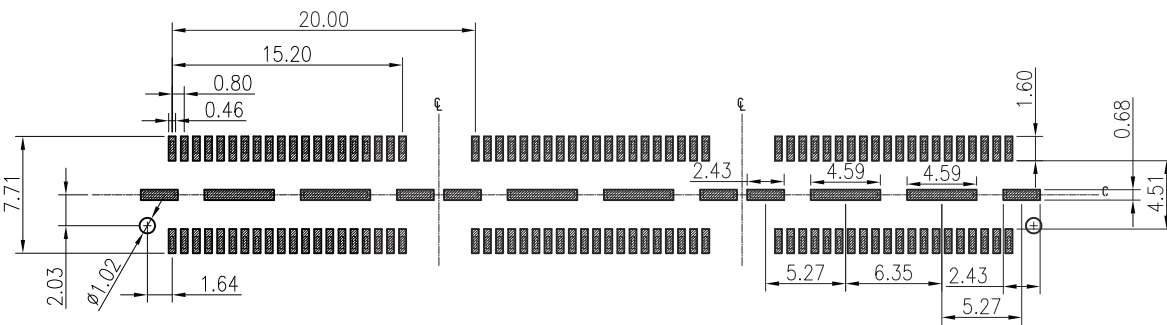
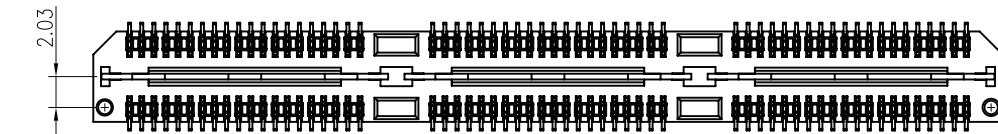
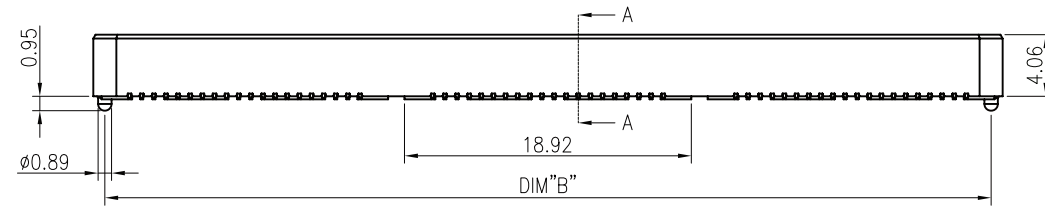
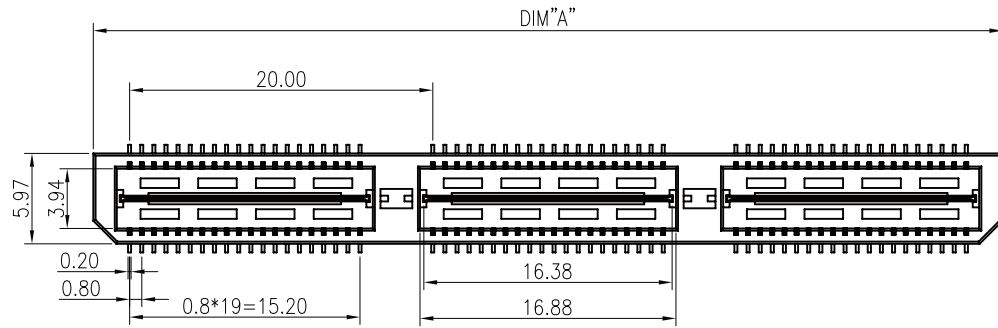


REV	DESCRIPTION	DATE
A	Initial Release	18.12.11

NOTES:

- HUOSING: LCP HIGH-TEMP THERMOPLASTIC UL94V-0 COLOR:BLACK
- TERMINAL/GROUND PLANE:PHOSPHOR BRONZE
PLATING:10u" GOLD IN CONTACT AREA, MATTE TIN ON TAIL.
- CODING INFORMATION: BBC 842D-xxxP-B3R-01

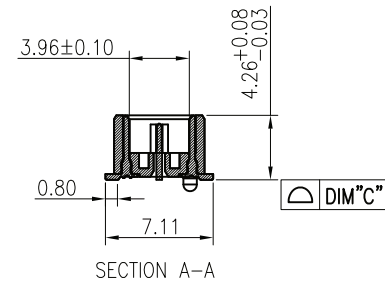
- WATER CODE
- PACKING: R: CARRIER REEL
- MATERIAL: 3:LCP
- COLOR: B:BLACK
- S:SOCKET PIN
- PLATING: G:GOLD FLASH 2:3u" GOLD IN CONTACT AREA, MATTE TIN ON TAIL.
- 3:5u" GOLD IN CONTACT AREA, MATTE TIN ON TAIL.
- 4:10u" GOLD IN CONTACT AREA, MATTE TIN ON TAIL.
- 5:15u" GOLD IN CONTACT AREA, MATTE TIN ON TAIL.
- 6:30u" GOLD IN CONTACT AREA, MATTE TIN ON TAIL.
- 0.8 BTB
HEIGHT: 4.26mm



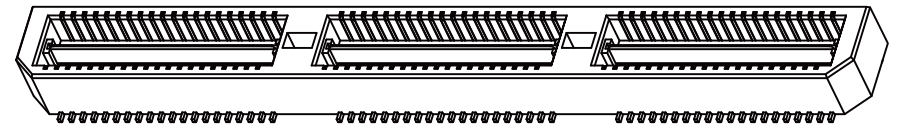
RECOMMENDED PCB PATTERN DIM.

TOLERANCE : ±0.05

GENERAL TOLERANCE	
.X	±0.30
.XX	±0.20
.XXX	±0.10
ANGLES	±0° 30'



NO. of contacts	Dimensions		
	A.	B.	C.
40	20.00	18.48	0.10
80	40.00	38.48	0.10
120	60.00	58.48	0.15
160	80.00	78.48	0.15
200	100.00	98.48	0.15



PANSTRONG COMPANY LTD.				DRAWN BY		TOMMY			
				CHECKED		TOMMY			
TITLE:				0.8mm DOUBLE ROW BTB PLUG H4.26		APPROVED		CAROL	
PART NO:				BBC842D-xxxP-B3R-01		DRAWING NO.			
SCALE		1:1	REV	A	UNIT	mm			