

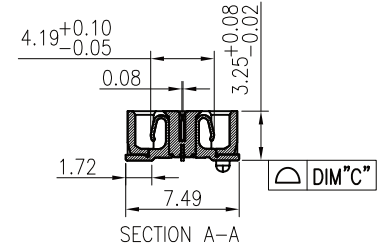
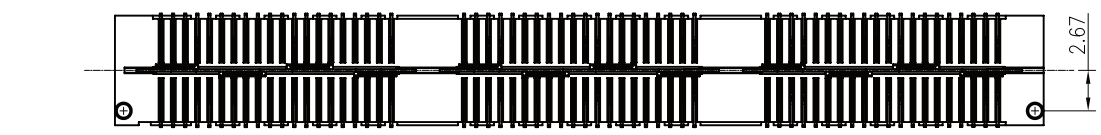
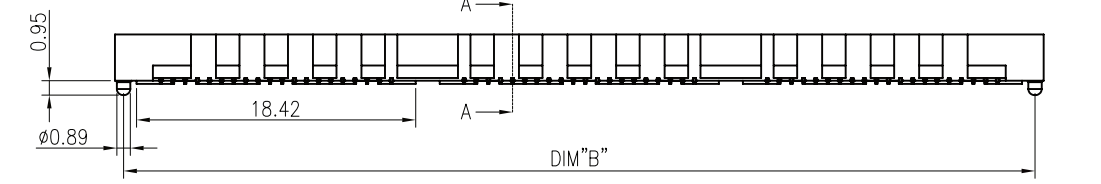
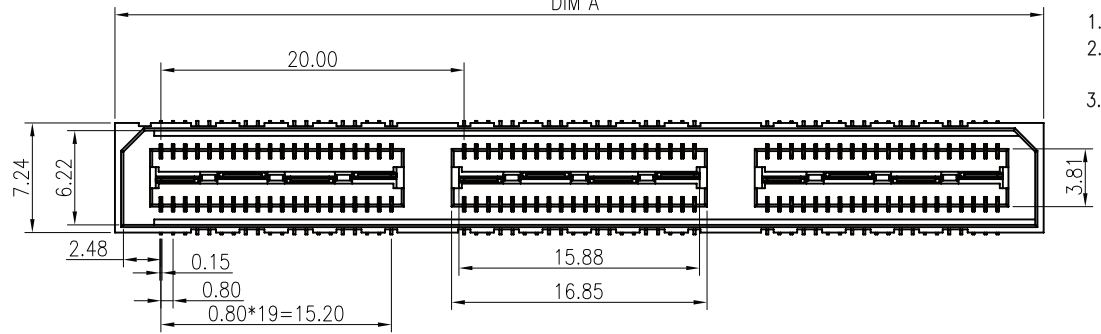
REV	DESCRIPTION	DATE
A	Initial Release	18.12.11

DIM"A"

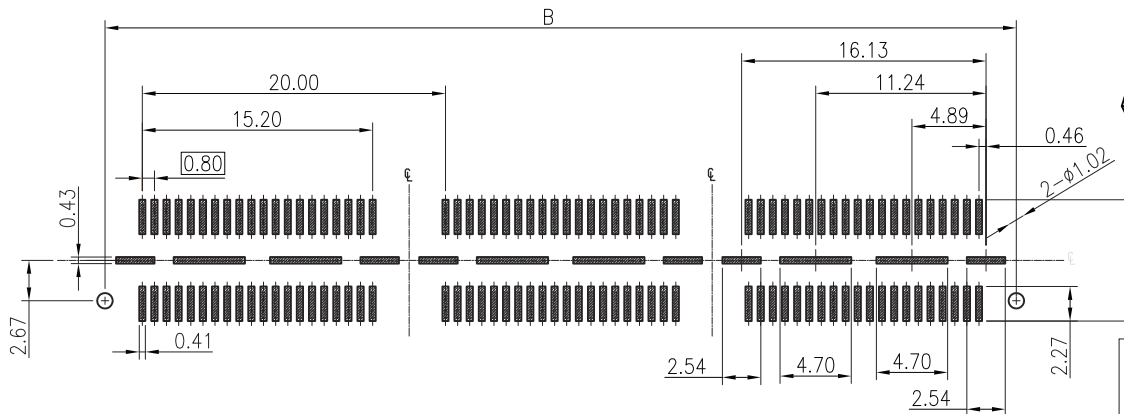
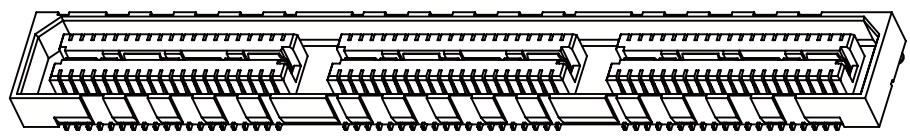
NOTES:

- HUOSING: LCP HIGH-TEMP THERMOPLASTIC UL94V-0 COLOR:BLACK
- TERMINAL/GROUND PLANE:PHOSPHOR BRONZE  
PLATING:10u" GOLD IN CONTACT AREA, MATTE TIN ON TAIL.
- CODING INFORMATION:BBC 832D-xxxS-B3R-01

- WATER CODE
- PACKING: R: CARRIER REEL
- MATERIAL: 3:LCP
- COLOR: B:BLACK
- S:SOCKET PIN
- PLATING: G:GOLD FLASH 2:3u" GOLD IN CONTACT AREA, MATTE TIN ON TAIL.  
3:5u" GOLD IN CONTACT AREA, MATTE TIN ON TAIL.  
4:10u" GOLD IN CONTACT AREA, MATTE TIN ON TAIL.  
5:15u" GOLD IN CONTACT AREA, MATTE TIN ON TAIL.  
6:30u" GOLD IN CONTACT AREA, MATTE TIN ON TAIL.
- 0.8 BTB  
HIGHLY: 32--3.25H



NO. of contacts	Dimensions		
	A.	B.	C.
40	21.28	20.13	0.10
80	41.28	40.13	0.10
120	61.28	60.13	0.15
160	81.28	80.13	0.15
200	101.28	100.13	0.15



RECOMMENDED PCB PATTERN DIM.  
TOLERANCE : ±0.05

GENERAL TOLERANCE	
.X	±0.30
.XX	±0.20
.XXX	±0.10
ANGLES	±0° 30'

				DRAWN BY		TOMMY	
				CHECKED		TOMMY	
TITLE:		0.8mm DOUBLE ROW BTB SOCKET H3.25		APPROVED		CAROL	
PART NO:		BBC832D-xxxS-B3R-01		DRAWING NO.			
SCALE		1:1	REV	A	UNIT	mm	